



HOLAX ENERGY CATALOG



ENERGY.HOLAXCO.COM



INDEX



HOLAX ENERGY	03
INTRODUCTION	05
PRODUCTS	07
CONTACT US	92

Holax Energy

Holax is a global holding company with a robust portfolio of companies operating in renewable energy, industrial supply, pharmaceuticals, and construction. With decades of experience, a multicultural workforce, and a future-focused leadership team, we drive performance through strategic investments and synergistic growth.

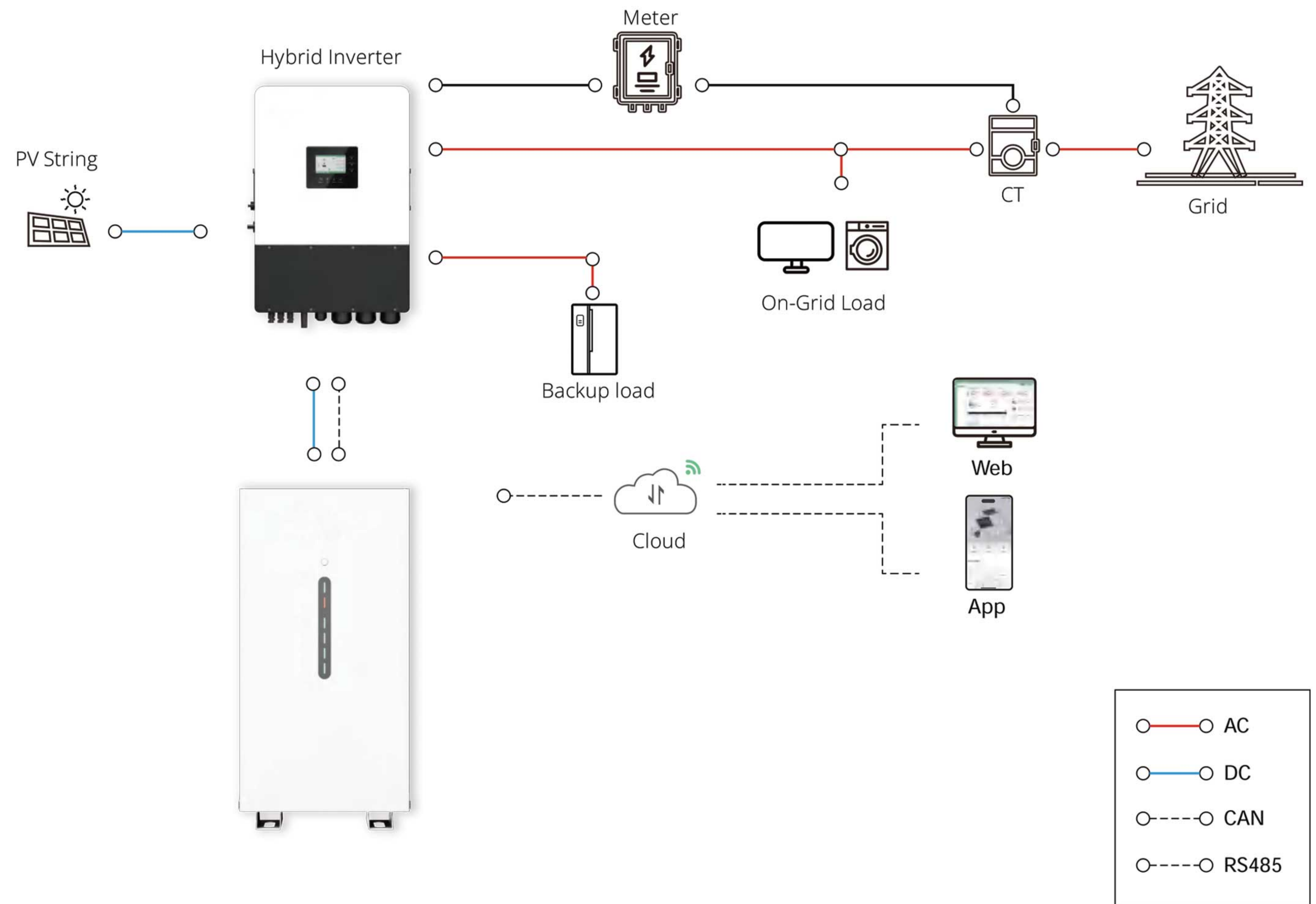
Our Mission
To create sustainable value for stakeholders by delivering world-class solutions that address critical global challenges.



Our Vision
To redefine global standards across industries through innovation, responsibility, and resilience.

Core Values
Integrity | Strategic Thinking | Innovation | Operational Discipline | Global Responsibility

Energy Storage System



Holax is a global holding company with a robust portfolio of companies operating in renewable energy, industrial supply, pharmaceuticals, and construction. With decades of experience, a multicultural workforce, and a future-focused leadership team, we drive performance through strategic investments and synergistic growth.

In this catalog, we present a curated selection of high-quality products that comply with international standards and address the diverse requirements of customers across industrial, commercial, and niche sectors. Each product is engineered and developed utilizing the latest technologies and in direct response to evolving market demands, ensuring optimal performance, long-term durability, and tangible added value for end users.



BATTERY STORAGE

HLX-Li-5



- 10 years warranty
- Flexible remote upgrade
- 1C rate continuous charge/discharge
- Active balancing charging, low self consumption
- Ultra safe LFP material
- Wide range inverter compatibility
- Multi protection to avoid over discharge
- Short circuit protection
- Parallel up to 32 modules
- Smart BMS management for longer lifespan

Model	HLX-Li-5
Cell Type	LFP
Rated Power	5.12kWh
Rated Capacity	100Ah
Rated Voltage	51.2V
Charge Voltage	56.5V
Max. Charge/Discharge Current	100A
Discharge Peak Current	105A / 15s, 150A / 0.5s
Parallel	Up to 32 units parallelable w/o extra device needed, slave battery drops offline or come back alive does not affect system running
IP Level	IP20
Dimension (W*H*D)	452.6*165*481mm / 17.8*6.5*18.9 in
Weight	50kg / 110.2lbs
Communication	CAN/RS485
Compatible Inverter	Victron, Luxpower, Deye, Voltronic, SMA Goodwe, Growatt, Sofar, Solark, SRNE, Must
Humidity	5%~85% RH (No condensation)
Work Temperature	-20 ~ +55 °C
Storage Temperature	-10 ~ +35 °C
Remote Maintenance	Flexible remote upgrade, Original firmware backup to prevent upgrade failure
Warranty *	10 years, 6000 cycles
Certification	CE UN38.3; IEC62619
Protection	Overcharge/discharge/current/voltage/temperature protection Short circuit protection, Reverse connection protection Charge balance, Low SOC protection

@25°C, 90% DOD. 0.5C testing condition

HLX-PGEM



- 0.5C Continuous Power
- Ultra safe LFP material
- Wide range inverter compatibility
- Active balancing charging, low self consumption
- years warranty 10
- Short circuit protection
- Multi protection to avoid over discharge
- 32 Units Stackable
- Flexible remote upgrade
- Smart BMS management for longer lifespan

Model	HLX-PGEM
Cell Type	LFP
Rated Power	5.12kWh
Rated Capacity	100Ah
Rated Voltage	51.2V
Charge Voltage	56.5V
Max. Charge/Discharge Current	100A
Discharge Peak Current	105A / 15s, 150A / 0.5s
Parallel	Up to 32 units parallelable w/o extra device needed, slave battery drops offline or come back alive does not affect system running
IP Level	IP20
Dimension (W*H*D)	428*640*166mm / 16.9*25.2*6.5 in
Weight	58kg / 127.9lbs
Communication	CAN/RS485
Compatible Inverter	Victron, Luxpower, Deye, Voltronic, SMA Goodwe, Growatt, Sofar, Solark, SRNE, Must
Humidity	5%~85% RH (No condensation)
Work Temperature	-20 ~ +55 °C
Storage Temperature	-10 ~ +35 °C
Remote Maintenance	Flexible remote upgrade, Original firmware backup to prevent upgrade failure
Warranty *	10 years, 6000 cycles
Certification	CE UN38.3; IEC62619
Protection	Overcharge/discharge/current/voltage/temperature protection Short circuit protection, Reverse connection protection Charge balance, Low SOC protection

@25 °C, 90% DOD. 0.5C testing condition

HLX-PGEM PRO



- 0.5C Continuous Power
- Ultra safe LFP material
- Wide range inverter compatibility
- Active balancing charging, low self consumption
- years warranty 10
- Short circuit protection
- Multi protection to avoid over discharge
- 32 Units Stackable
- Flexible remote upgrade
- Smart BMS management for longer lifespan

Model	HLX-PGEM PRO
Cell Type	LFP
Rated Power	14.3kWh
Rated Capacity	280Ah
Rated Voltage	51.2V
Charge Voltage (Vdc)	56.5V
Battery Charge Current (A)	140 (max. continuous) 150 (start limit current to 10A, retest every 10 minutes) 160 (peak1 15S) 180 (peak2 500ms)
Battery DisCharge Current (A)	140 (max. continuous) 150 (start giving over-current alarm but not stop discharging) 160 (peak1 5minutes) 200 (peak2 500ms)
Parallel	Up to 32 units parallelable w/o extra device needed, slave battery drops offline or come back alive does not affect system running
IP Level	IP20
Dimension (W*H*D)	475*900*238mm / 18.7*35.4*9.4 in
Weight	115kg / 253.5lbs
Communication	CAN/RS485
Robust Applications	Auto-addressing and stronger protection
DOD	90%
Cycles	8000
Compatible Inverter	Victron, Luxpower, Deye, Voltronic, SMA Goodwe, Growatt, Sofar, Solark, SRNE, Must
Humidity	5%~85% RH (No condensation)
Work Temperature	-20 ~ +55 °C
Storage Temperature	-10 ~ +35 °C
Remote Maintenance	Flexible remote upgrade, Original firmware backup to prevent upgrade failure
Warranty *	10 years, 8000 cycles
Certification	CE UN38.3; IEC62619
Protection	Overcharge/discharge/current/voltage/temperature protection Short circuit protection, Reverse connection protection Charge balance, Low SOC protection

@25 °C, 90% DOD. 0.5C testing condition

HLX-PSHIELD



- IP65 built-in with heating for extreme outdoor use
- Wide range inverter compatibility
- Handy monitor & flexible remote upgrade
- Smart BMS management for longer lifespan
- DC Breaker built-in
- 1C rate continuous charge/discharge
- Second level protection, robust applications
- Parallel up to 32 modules
- Ultra safe LFP material, 10-year warranty
- Active balancing charging, low self consumption

Model	HLX-PSHIELD
Cell Type	LFP
Rated Power	5.12kWh
Rated Capacity	100Ah
Rated Voltage	51.2V
Charge Voltage	57.2V
Max. Charge/Discharge Current	100A
Discharge Peak Current	105A / 15s, 150A / 0.5s
Parallel	Up to 32 units parallelable w/o extra device needed, slave battery drops offline or come back alive does not affect system running
IP Level	IP65
Dimension (W*H*D)	500*650*167mm / 19.7*25.6*6.6 in
Weight	60kg / 132.3lbs
Communication	CAN/RS485
Compatible Inverter	Victron, Luxpower, Deye, Voltronic, SMA Goodwe, Growatt, Sofar, Solark, SRNE, Must
Humidity	5%~85% RH (No condensation)
Work Temperature	-20°C~ +55°C, heating system built-in
Storage Temperature	-10°C~ +35°C
Remote Maintenance	Handy monitor & flexible remote upgrade, Original firmware backup to prevent upgrade failure
Warranty *	10 years, 6000 cycles
Certification	CE UN38.3; IEC62619
Protection	Over charge/discharge/current/voltage/temperature protection Short circuit protection, Reverse connection protection Charge balance, Low SOC protection

@25°C, 90% DOD. 0.5C testing condition

HLX-PSTACK



- Series per stack 8
- Ultra safe LFP material
- Wide range inverter compatibility
- Stack parallel 20
- Short circuit protection
- High Voltage battery
- 10 years warranty
- Flexible remote upgrade



Model	HLX-PSTACK
Scalable Connection	2~8pcs series per stack, up to 20 stack parallel
Battery module nominal voltage	70.4V
Battery module nominal capacity	72Ah
Battery module nominal energy	5.069kWh
Protection	IP65
Battery module voltage range	61.6V~80.3V
Recommend charge/discharge current	36A, 0.5C per battery module
Max continuous charge/discharge current	50.4A, 0.7C per battery module
Max continuous charge/discharge power	3.548 kW per battery module
Max. series number per cluster	8 series
Cluster parallel	Up to 20 clusters, without extra unit needed
Charging/Discharging temperature	0 ~ +55 °C, -20 ~ +55 °C
Recommend storage temperature	-10 ~ +35 °C (Max. range -30 ~ +55 °C)
Recommend storage humidity	10% ~ 90% RH
Warranty *	10 years, 6000 cycles
Certification	CE UN38.3; IEC62619
Remote Maintenance	Flexible remote upgrade, Original firmware backup to prevent upgrade failure

@25°C, 90% DOD. 0.5C testing condition

Battery Capacity	Voltage	Weight	Dimension
10kWh	140.8V	110kg / 242.5lbs	736*577*382mm / 29.0*22.7*15.0 in
15kWh	211.2V	155kg / 341.7lbs	736*735*382mm / 29.02*28.9*15.0 in
20kWh	281.6V	200kg / 440.9lbs	736*893*382mm / 29.0*35.2*15.0 in
25kWh	352V	245kg / 540.1lbs	736*1051*382mm / 29.0*41.4*15.0 in
30kWh	422.4V	290kg / 639.3lbs	736*1209*382mm / 29.0*47.6*15.0 in
35kWh	492.8V	335kg / 738.6lbs	736*1367*382mm / 29.0*53.8*15.0 in
40kWh	563.2V	380kg / 837.8lbs	736*1525*382mm / 29.0*60.0*15.0 in

HLX-PSHIELD PRO



- Up to 8,000 cycles with a 10-year warranty
- Optional heating system & fire suppression for extreme conditions
- 51.2V low voltage, 16kWh for daily household energy needs
- Auto addressing for seamless expansion
- Wheels & standing foot options available
- Intuitive interface with flexible OTA updates
- Works with hybrid & off-grid inverters

Model	HLX-PSHIELD PRO
Cell Type	2~8pcs series per stack, up to 20 stack parallel
Rated Power	16.076kWh
Rated Capacity	314Ah
Rated Voltage	51.2V
Charge Voltage (Vdc)	56.5V
Battery Charge Current (A)	165(max continuous) 170(start limit current to 10A, retest every 10 minutes) 180(peak1 15S), 200(peak2 500ms)
Battery Discharge Current (A)	165(max continuous) 170 (start giving over-current alarm but not stop discharging) 180(peak1 5minutes), 200(peak2 500ms)
Parallel	Up to 32 units parallelable w/o extra device needed, slave battery drops offline or come back alive does not affect system running
IP Level	IP65
Dimension (W*H*D)	475*900*236mm / 18.7*35.4*9.3 in
Weight	125Kg
Communication	CAN/RS485
Robust Applications	Auto-addressing and stronger protection
DOD	90%
Cycles	8000
Compatible Inverter	Victron, Luxpower, Deye, Voltronic, SMA Goodwe, Growatt, Sofar, Solark, SRNE, Must
Humidity	5%~85% RH (No condensation)
Work Temperature	-20 °C ~ +55 °C
Storage Temperature	-10 °C ~ +35 °C
Remote Maintenance	Flexible remote upgrade, Original firmware backup to prevent upgrade failure
Warranty *	10 year, 8000 cycles
Certification	CE; UN38.3; IEC62619
Protection	Over charge/discharge/current/voltage/temperature protection Short circuit protection/Reverse connection protection/ Charge balance/Low SOC protection

@25 °C, 90% DOD. 0.5C testing condition



INVERTER

Intelligent Working Modes

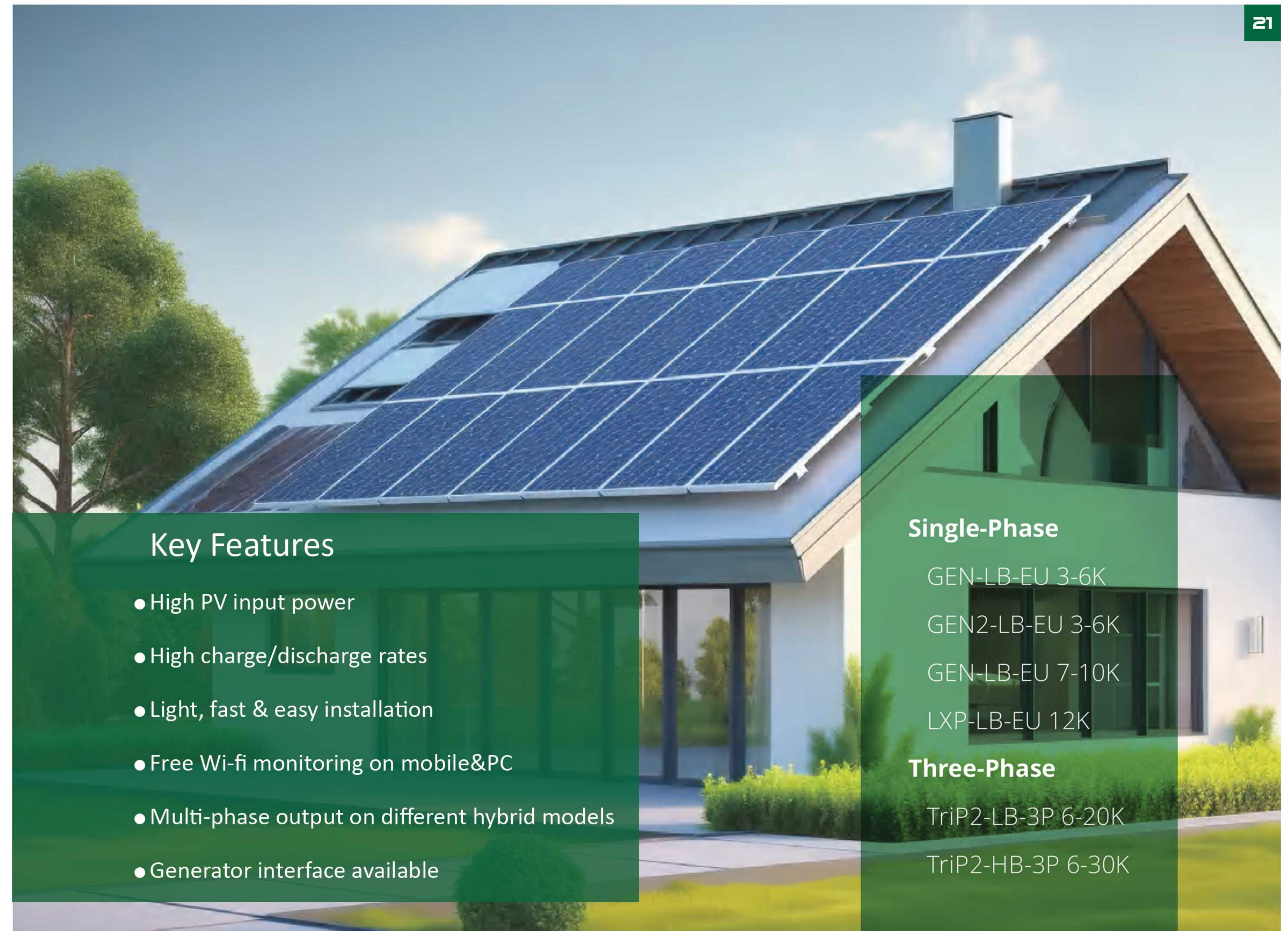
- Weather compensation and smart octopus charging packages
- Self consumption mode for high tariff areas
- Charge priority mode for areas where grid power is unstable
- Force charge & discharge mode for variable tariff integration

Smart EPS (Emergency Power Supply)

- Plug & Play integrated changeover, seamless switching under 20ms
- Auto backup power for critical load emergency supply

Intelligent Battery Integration

- Remote upgrade for battery management system (BMS) firmware
- Wide range of compatible battery brands
- Auto 'wake-up' function of lithium battery from sleep mode
- Essential info uploaded to LUX server for quick ESS diagnosis
- Battery sharing with multi-inverters in single-phase or three phase



Key Features

- High PV input power
- High charge/discharge rates
- Light, fast & easy installation
- Free Wi-fi monitoring on mobile&PC
- Multi-phase output on different hybrid models
- Generator interface available

Single-Phase

- GEN-LB-EU 3-6K
- GEN2-LB-EU 3-6K
- GEN-LB-EU 7-10K
- LXP-LB-EU 12K

Three-Phase

- TriP2-LB-3P 6-20K
- TriP2-HB-3P 6-30K

Advanced Parallel Units (Parallel Versions)

- Up to 10 units parallel
- Single-phase and unbalanced three-phase paralleling

HYBRID SERIES

HLX-GEN-LB-EU 3-6K(SINGLE-PHASE)



- 2 MPPTs with Max. PV Input of 9.6kW, 18A Max. PV Input Current per MPPT
- Max. charge and discharge current: 125/140A
- Support up to 10pcs in parallel for on/off grid
- Time of Use and weather optimization charge for e-bill reduction
- On/off grid seamless switching
- Separate port for
 - Generator connection
 - Auto generator control
 - Support generator exercise
 - Support generator boost function
 - Or smart load connection and auto control
 - Or AC coupling function

HYBRID SERIES

Model	HLX-GEN-LB-EU 3K	3.6K	4K	4.6K	5K	6K
Input (PV DC)						
Max. PV input power (W)	6600	7000		9000		9600
Rated PV input voltage (V)	360					
Number of independent MPPT inputs	2/(1:1)					
PV input voltage range (V)	100~530					
MPPT voltage range (V)	150~425					
Start-up voltage (V)	100					
Max. PV input current per MPPT (A)	18					
Max. PV short-circuit current input per MPPT (A)	32					
Battery						
Compatible battery type	Lithium-ion/Lead-Acid					
Rated battery voltage (V)	48					
Battery voltage range (V)	40~60					
Max. charging/discharging current (A)	80/80	80/80	80/80	96/96	105/120	125/140
Max. charging/discharging power (W)	3000	3600	4000	4600	5000	6000
Force wake up battery from PV function	YES					
Grid						
Rated AC voltage (V)	230					
Rated AC frequency (Hz)	50/60					
Rated AC output current (A)	13	15.7	17.4	20	21.7	26
Rated AC output power (W)	3000	3600	4000	4600	5000	6000
Max. AC input power (W)	12000					
PF	0.99(Adjustable from 0.8 leading to 0.8 lagging)					
THDI	<3%					
Max. continuous AC passthrough current(A)	52.2					
GEN						
Rated GEN voltage (V)	230					
Rated GEN frequency (Hz)	50/60					
Rated GEN input current (A)	26					
Rated GEN input power (W)	6000					
Rated GEN current of BYPASS relays (A)	60					
UPS						
Rated output power (W)	3000	3600	4000	4600	5000	6000
Rated output voltage (V)	230					
Rated output current (A)	13	15.7	17.4	20	21.7	26
Rated output frequency (Hz)	50/60					
Surge power, duration	2Pn, 0.5s					
Switching time (UPS)	20ms					
Wave form	Sine wave					
THDV	<5%					

HLX-GEN-LB-EU 3-6K (SINGLE-PHASE)



Efficiency	
MPPT efficiency	99.9%
Max. efficiency	97.3%
Max. charging efficiency	94.5%
Max. discharging efficiency	94.5%
Protection	
Over current/voltage protection	YES
Anti-islanding protection	YES
AC Short-circuit current protection	YES
Leakage current protection	YES
Ground fault monitoring	YES
Grid monitoring	YES
DC switch	YES
DC surge protection	Type III
AC surge protection	Type III
General	
Dimensions (W*H*D)	487*455*211.7mm / 19.2*17.9*8.3 in
Weight	29kg / 64lbs
Ingress protection rating	IP65
Operating environment temperature range (°C)	-25~60
Storage temperature range (°C)	-40~65
Relative humidity	0~95%
Display & Communication interface	LCD+RGB, RS485/Wi-Fi/CAN
Warranty	5/10 years
Cooling method	Smart cooling
Topology on AC side	Transformer-less
Topology on Battery side	Transformer
Altitude(m)	2000
Noise emission(typical)	50dB
DC connection(VP-D4/MC4(Optional))	MC4
AC connector	YES

Standards & Certification

G99, G100, CEI 0-21, RD 1699, NTS, UNE 217001, NRS 097, EN/IEC 62109-1/2, IEC 61683, EN 61000, EN 62920, IEC62116, IEC61727

HYBRID SERIES

HLX-GEN2-LB-EU 3-6K (SINGLE-PHASE)

- 2 MPPTs with Max. PV Input of 9.6kW, 18A Max. PV Input Current per MPPT
 - Max. Charge/Discharge Current: 125A (Charge) / 140A (Discharge)
 - Parallel Operation Support: Up to 10 units for both on-grid and off-grid systems
 - 24/7 Real-Time Monitoring: Access and manage remotely
- Dedicated Ports for Multiple Connections:
- Generator Connection
 - Smart Load Connection
 - AC Coupling Function



HYBRID SERIES

Model	HLX-GEN2-LB-EU3K	3.6K	4K	4.6K	5K	6K
Input (PV DC)						
Max. PV input power (W)	6600	7000		9000		9600
Rated PV input voltage (V)	360					
Number of independent MPPT inputs	2/(1:1)					
PV input voltage range (V)	100~530					
MPPT voltage range (V)	150~425					
Start-up voltage (V)	100					
Max. PV input current per MPPT (A)	18					
Max. PV short-circuit current input per MPPT (A)	32					
Battery						
Compatible battery type	Lithium-ion/Lead-Acid					
Rated battery voltage (V)	48					
Battery voltage range (V)	40~60					
Max. charging/discharging current (A)	80/80	80/80	80/80	96/96	105/120	125/140
Max. charging/discharging power (W)	3000	3600	4000	4600	5000	6000
Force wake up battery from PV function	YES					
Grid						
Rated AC voltage (V)	230					
Rated AC frequency (Hz)	50/60					
Rated AC output current (A)	13	15.7	17.4	20	21.7	26
Rated AC output power (W)	3000	3600	4000	4600	5000	6000
Max. AC input power (W)	12000					
PF	0.99(Adjustable from 0.8 leading to 0.8 lagging)					
THDI	<3%					
Max. continuous AC passthrough current(A)	52.2					
GEN						
Rated GEN voltage (V)	230					
Rated GEN frequency (Hz)	50/60					
Rated GEN input current (A)	26					
Rated GEN input power (W)	6000					
Rated GEN current of BYPASS relays (A)	60					
UPS						
Rated output power (W)	3000	3600	4000	4600	5000	6000
Rated output voltage (V)	230					
Rated output current (A)	13	15.7	17.4	20	21.7	26
Rated output frequency (Hz)	50/60					
Surge power, duration	2Pn, 0.5s					
Switching time (UPS)	20ms					
Wave form	Sine wave					
THDV	<5%					

HLX-GEN2-LB-EU 3-6K(SINGLE PHASE)



Efficiency	
MPPT efficiency	99.9%
Max. efficiency	97.3%
Max. charging efficiency	94.5%
Max. discharging efficiency	94.5%
Protection	
Over current/voltage protection	YES
Anti-islanding protection	YES
AC Short-circuit current protection	YES
Leakage current protection	YES
Ground fault monitoring	YES
Grid monitoring	YES
DC switch	YES
DC surge protection	Type III
AC surge protection	Type III
General	
Dimensions (W*H*D)	524*420*219.5mm / 20.6*16.5*8.6 in
Weight	TBD
Ingress protection rating	IP65
Operating environment temperature range (°C)	-25~60
Storage temperature range (°C)	-40~65
Relative humidity	0~95%
Display & Communication interface	LCD+RGB, RS485/Wi-Fi/CAN
Warranty	5/10 years
Cooling method	Smart cooling
Topology on AC side	Transformer-less
Topology on Battery side	Transformer
Altitude(m)	2000
Noise emission(typical)	50dB
DC connection(VP-D4/MC4(Optional))	MC4
AC connector	YES

Standards & Certification

G99, G100, CEI 0-21, RD 1699, NTS, UNE 217001, NRS 097

HYBRID SERIES

HLX-GEN-LB-EU 7-10K(SINGLE-PHASE)

- 2 MPPTs, Max. PV input 15kW
- Max. charging and discharging current: 210A
- Supports up to 10pcs in parallel for on/off grid
- Time of Use and weather optimization charge for e-bill reduction
- Separate port for:
 - Generator connection
 - Auto generator control
 - Support generator exercise
 - Support generator boost function
 - Or smart load connection and auto control
 - Or AC coupling function



HYBRID SERIES

Model	HLX-GEN-LB-EU 7K	8K	10K
INPUT (PV DC)			
Max. PV input power(W)	12000	12000	15000
Rated PV input voltage(V)		360	
Number of independent MPPT inputs		2/(2:2)	
PV input voltage range(V)		100~600	
MPPT voltage range(V)		120~500	
Start-up voltage(V)		140	
Max. PV input current per MPPT(A)		25	
Max. PV short-circuit current input per MPPT(A)		34	
Battery			
Compatible battery type	Lithium-ion/Lead-Acid		
Rated battery voltage(V)	48		
Battery voltage range(V)	40~60		
Max. charge/discharge current(A)	146	167	210
Max. charge/discharge power(W)	7000	8000	10000
Force wake up battery from PV function	YES		
Grid			
Rated AC voltage(V)	230		
Rated AC frequency(Hz)	50/60		
Rated AC output current(A)	30.4	34.7	43.5
Rated AC output power(W)	7000	8000	10000
Max. AC input power(W)	15000		
PF	0.99 (Adjustable from 0.8 leading to 0.8 lagging)		
THDI	<3%		
Max. continuous AC passthrough current(A)	90		
GEN			
Rated GEN voltage (V)	230		
Rated GEN frequency (Hz)	50/60		
Rated GEN input current (A)	60		
Rated GEN input power (W)	13800		
Rated GEN current of BYPASS relays (A)	90		
UPS			
Rated output power(W)	7000	8000	10000
Rated output voltage(V)	230		
Rated output current(A)	30.4	34.7	43.5
Rated output frequency(Hz)	50/60		
Surge power, duration	2Pn, 0.5s		
Switching time (UPS)	<20ms		
Wave form	Sine wave		
THDV	<3%		

HLX-GEN-LB-EU 7-10K(SINGLE PHASE)



Efficiency	
MPPT efficiency	99.9%
Max. efficiency	97.5%
Max. charge/discharge efficiency	94.0%
Protection	
PV reverse polarity protection	YES
Over current/voltage protection	YES
Anti-islanding protection	YES
AC Short-circuit current protection	YES
Leakage current protection	YES
Ground fault monitoring	YES
Grid monitoring	YES
DC Switch	YES
AC/DC Surge protection	Type III
General	
Dimensions(W*H*D)	536*556*290mm/21.1*21.9*11.4in
Weight	42.64kg/94lbs
Ingress protection rating	IP65/NEMA 4X
Relative humidity	0~100%
Operating environment temperature range(°C)	-25~60
Storage temperature range(°C)	-25~60
Display & Communication interface	Touch color screen, RS485/Wifi/CAN
Warranty	5 years
Cooling method	Smart cooling
Topology	Transformer-less
Altitude	<2000m
Noise emission(typical)	<50dB
Standard & Certification	
G99, G100, NRS 097,EN/IEC 62109-1/2, IEC 61683, EN 61000,, EN 62920,IEC62116,IEC61727	

HLX-GEN-LB-EU 12K (SINGLE-PHASE)

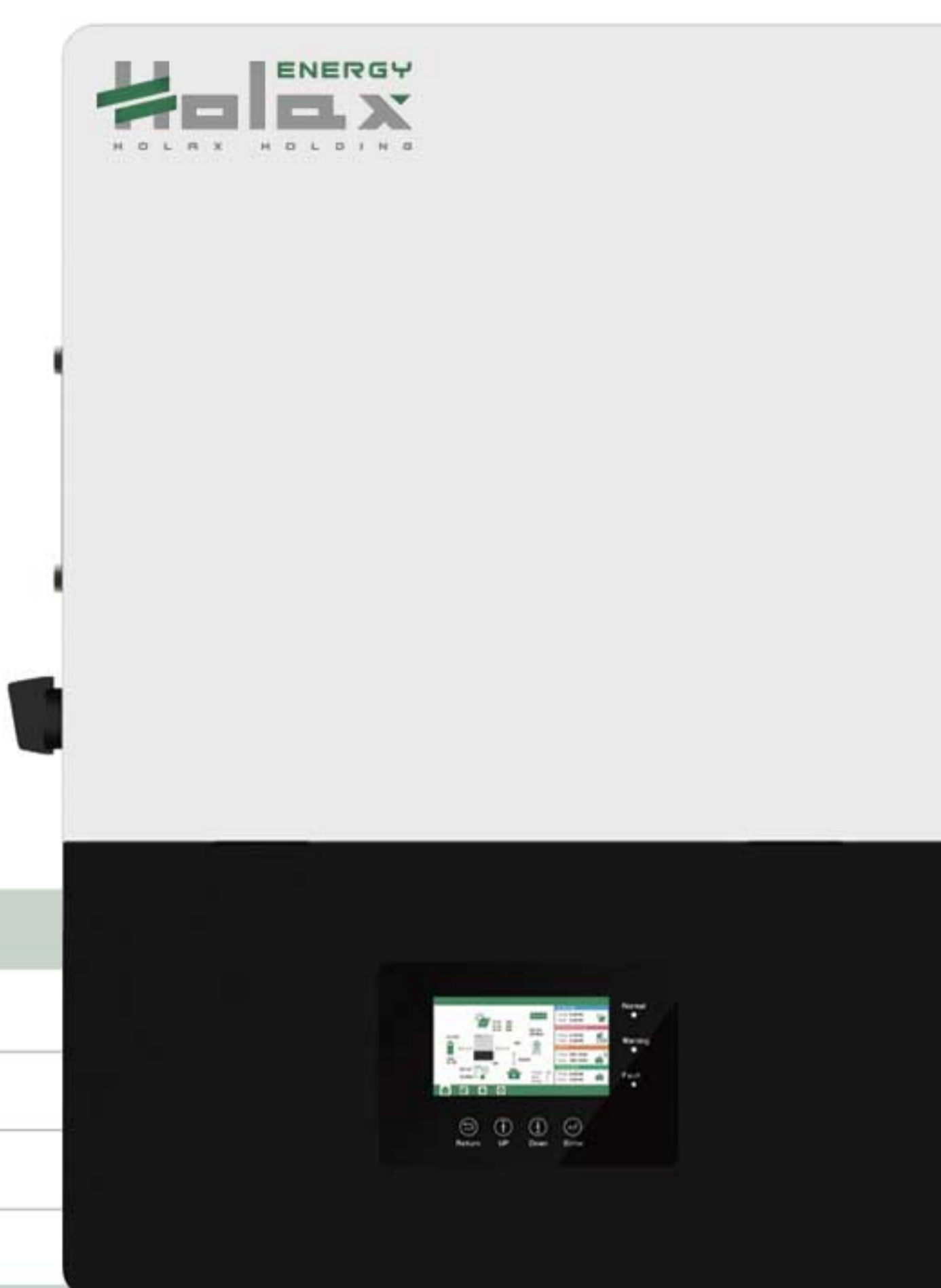
- 3 MPPTs, Max. 18kW of PV input
- 12kW UPS output for backup during power cuts
- Supports up to 10pcs in parallel for on/off grid
- On/off grid seamless switching
- Separate port for
 - Generator connection
 - Auto generator control
 - Support generator exercise
 - Support generator boost function
 - Or smart load connection and auto control
 - Or AC coupling function



HYBRID SERIES

Model	HLX-GEN-LB-EU12K
INPUT (PV DC)	
Max. PV input power(W)	18000
Max. PV input power (W)	360
Rated PV input voltage (V)	3/(2:1:1)
Number of independent MPPT inputs	100~600
MPPT voltage range (V)	120~500
Start-up voltage (V)	140
Max. PV input current per MPPT (A)	25/15/15
Max. PV short-circuit current input per MPPT (A)	31/19/19
Battery	
Compatible battery type	Lithium-ion/Lead-Acid
Rated battery voltage(V)	48
Battery voltage range(V)	40~60
Max. charge/discharge current(A)	250
Max. charge/discharge power(W)	12000
Force wake up battery from PV function(Y/N)	YES
Grid	
Rated AC voltage(V)	230
Rated AC frequency(Hz)	50/60
Rated AC output current(A)	50
Rated AC output power(W)	11500
Max. AC input current(A)	200
PF	0.99 (Adjustable from 0.8 leading to 0.8 lagging)
THDI	<3%
Max. continuous AC passthrough current(A)	200
GEN	
Rated GEN voltage (V)	230
Rated GEN frequency (Hz)	50/60
Rated GEN input current (A)	65
Rated GEN input power (W)	15000
Rated GEN current of BYPASS relays (A)	90
UPS	
Rated output power (W)	11500
Rated output voltage (V)	230
Rated output current (A)	50
Rated output frequency(Hz)	50/60
Surge power, duration	2Pn, 0.5s
Switching time	20ms
Wave form	Sine wave
THDV	3%

HLX-GEN-LB-EU 12K (SINGLE-PHASE)



Efficiency	
MPPT efficiency	99.9%
EU efficiency	96.0%
Max. efficiency	97.5%
Max. charge / discharge efficiency	94.0%
Protection	
PV reverse polarity protection	YES
Over current/voltage protection	YES
Anti-islanding protection	YES
AC Short-circuit current protection	YES
Leakage current protection	YES
Ground fault monitoring	YES
Grid monitoring	YES
DC Switch	YES
AC/DC Surge protection	Type III
General	
Dimensions(W*H*D)	490*670*265mm/19.3*26.3*10.4in
Weight	50kg/110.2lbs
Ingress protection rating	IP66
Relative humidity	0~100%
Operating environment temperature range(°C)	-25~60°C, >45°C Derating
Storage temperature range(°C)	-25~60
Display & Communication interface	Touch color screen, RS485/Wi-Fi/CAN
Warranty	5 years
Cooling method	Smart Cooling
Topology	Transformer-less
Altitude (m)	<2000
Noise emission(typical)	<50dB

Standards & Certification

EMC SANS 211:2010, CISPR 2015+A1:2016, IEC 61000-2-2-2012+A1:2017+A2:2018, Cape Town list, G99, G100, NRS 097-2-1:2017, EN/IEC 62109-1/2, IEC 61683,

HYBRID SERIES

HLX-LB-EU 12K(SINGLE-PHASE)

- 3 MPPTs, Max. 18kW of PV input
- 12kW UPS output for backup during power cuts
- Supports up to 10pcs in parallel for on/off grid
- On/off grid seamless switching
- Separate port for:
 - Generator connection
 - Auto generator control
 - Support generator exercise
 - Support generator boost function
 - Or smart load connection and auto control
 - Or AC coupling function



HYBRID SERIES

Model	HLX-LB-EU12K
INPUT (PV DC)	
Max. PV input power(W)	18000
Max. PV input power (W)	360
Rated PV input voltage (V)	3/(2:1:1)
Number of independent MPPT inputs	100~600
MPPT voltage range (V)	120~500
Start-up voltage (V)	140
Max. PV input current per MPPT (A)	25/15/15
Max. PV short-circuit current input per MPPT (A)	31/19/19
Battery	
Compatible battery type	Lithium-ion/Lead-Acid
Rated battery voltage(V)	48
Battery voltage range(V)	40~60
Max. charge/discharge current(A)	250
Max. charge/discharge power(W)	12000
Force wake up battery from PV function(Y/N)	YES
Grid	
Rated AC voltage(V)	230
Rated AC frequency(Hz)	50/60
Rated AC output current(A)	50
Rated AC output power(W)	11500
Max. AC input current(A)	200
PF	0.99 (Adjustable from 0.8 leading to 0.8 lagging)
THDI	<3%
Max. continuous AC passthrough current(A)	200
GEN	
Rated GEN voltage (V)	230
Rated GEN frequency (Hz)	50/60
Rated GEN input current (A)	60
Rated GEN input power (W)	13800
Rated GEN current of BYPASS relays (A)	90
UPS	
Rated output power (W)	11500
Rated output voltage (V)	230
Rated output current (A)	50
Rated output frequency(Hz)	50/60
Surge power, duration	2Pn, 0.5s
Switching time	20ms
Wave form	Sine wave
THDV	3%

HLX-LB-EU 12K(SINGLE-PHASE)



Efficiency	
MPPT efficiency	99.9%
Max. efficiency	97.5%
Max. charge efficiency	94.0%
Max. discharge efficiency	94.0%
Protection	
PV reverse polarity protection	YES
Over current/voltage protection	YES
Anti-islanding protection	YES
AC Short-circuit current protection	YES
Leakage current protection	YES
Ground fault monitoring	YES
Grid monitoring	YES
DC Switch	YES
AC/DC Surge protection	Type III
General	
Dimensions(W*H*D)	490*670*265mm/19.3*26.3*10.4in
Weight	50kg/110.2lbs
Ingress protection rating	IP65
Relative humidity	0~100%
Operating environment temperature range(°C)	-25~60°C, >45°C Derating
Storage temperature range(°C)	-25~60
Display & Communication interface	Touch color screen, RS485/Wi-Fi/CAN
Warranty	5 years
Cooling method	Smart Cooling
Topology	Transformer-less
Altitude	<2000m
Noise emission(typical)	<50dB

Standards & Certification

EMC SANS 211:2010, CISPR 2015+A1:2016, IEC 61000-2-2-2012+A1:2017+A2:2018, Cape Town list, G99, G100, NRS 097-2-1:2017, EN/IEC 62109-1/2, IEC 61683,

HYBRID SERIES

HLX-TRIP2-LB-3P 6-20K (THREE-PHASE)

- Supports Three-phase unbalanced load and half-wave load
- Max. 3 MPPTs with 6 strings, Max. PV input: 30kW
- 48V low voltage battery, transformer isolation design
- Time of use, 8 time periods for charging & discharging
- Max. 6 pcs parallel for on grid & off grid
- Dedicated GEN port for:
 - Auto GEN control
 - Smart load function
 - AC coupling function

LOW VOLTAGE



LOW VOLTAGE

Model	HLX-TRIP2-LB-3P6K	8K	10K	12K	15K	15KPRO	20K
Input (PV DC)							
Max. PV input power (W)	9000	12000	15000	18000	22500	22500	30000
Rated PV input voltage (V)	690						
Number of independent MPPT inputs	2/(2:2)			3/(2:2:2)			
Max. PV input voltage (V)	1000						
MPPT voltage range (V)	200-900						
Start-up voltage (V)	100						
Max. PV input current per MPPT (A)	20/20			40/40/40			
Max. PV short-circuit current input per MPPT	25/25			50/50/50			
Battery							
Compatible battery type	Lithium-ion/Lead-Acid						
Battery voltage range (V)	40-60						
Max. charging/discharging current (A)	150	200	220	250	250	315	350
Max. charging/discharging power (W)	6000	8000	10000	12000	12000	15000	16800
Charging Strategy for Li-ion Battery	Self-adaption to BMS						
Input AC (Grid)							
Input voltage range	3L/N/PE, 230/400Vac						
Rated AC frequency (Hz)	50/60						
Max. AC input power (W)	7500	10000	12500	15000	18750	18750	25000
Max. input current	11.36	15.15	18.94	22.73	28.41	28.41	37.88
Output AC (Grid)							
Rated AC voltage (V)	3L/N/PE, 230/400Vac						
Rated AC frequency (Hz)	50/60						
Rated AC output power (W)	6000	8000	10000	12000	15000	15000	20000
Rated AC output current (A)	9.09	12.12	15.15	18.18	22.73	22.73	30.30
Max. AC output apparent power (VA)	7500	10000	12500	15000	18750	18750	25000
Max. AC input current (A)	11.36	15.15	18.94	22.73	28.41	28.41	37.88
PF	0.99(Adjustable from 0.8 leading to 0.8 lagging)						
THDI	< 3%						
Max. continuous AC passthrough current (A)	30			50		70	
GEN							
Rated GEN voltage (V)	3L/N/PE, 230/400Vac						
Rated GEN frequency (Hz)	50						
Rated GEN input current (A)	30						
Rated GEN input power (W)	12000						
Rated GEN current of BYPASS relays (A)	60						

HLX-TRIP2-LB-3P 6-20K (THREE-PHASE)

UPS	6000	8000	10000	12000	15000	15000	20000
Rated output power (W)	6000	8000	10000	12000	15000	15000	20000
Rated output voltage (V)	3L/N/PE, 230/400Vac						
Rated output current (A)	9.09	12.12	15.15	18.18	22.73	22.73	30.30
Rated output frequency (Hz)	50/60						
Surge power, duration	1.5Pn, 10s						
Switching time	20ms						
Wave form	Sine wave						
THDV	<3%						
Efficiency							
Max. efficiency	97.7%						
EU efficiency	97.0%						
Protection							
PV reverse polarity protection	YES						
Over current/voltage protection	YES						
Anti-islanding protection	YES						
AC Short-circuit protection	YES						
Leakage current protection	YES						
Grid monitoring	YES						
DC switch	YES						
Ingress protection	YES						
DC Surge protection	YES						
AC Surge protection	YES						
General							
Dimensions(W*H*D)	TBD						
Weight	TBD						
Ingress protection rating	IP66						
Operating environment temperature range(°C)	-25~+60, >45°C derating						
Storage temperature range(°C)	-25~+60						
Relative humidity	0~100						
Display & Communication interface	Touch color screen, RS485/Wifi/CAN						
Warranty	5/10 years						
Cooling method	Smart cooling						
Topology	Transformer-less						
Altitude	<2000m						
Noise emission(typical)	<50dB						
Standards & Certification							





HIGH VOLTAGE

HLX-TRIP2-HB-3P 6-30K (THREE-PHASE)

- Max. 3 MPPTs and Max. PV input 45kW
- Battery working range: 100~700V
- Max. 30kW UPS output
- Supports up to 10pcs in parallel for on/off grid
- Separate GEN port
 - Smart load control
 - Up to 21.6kW Gen/AC coupling input

HYBRID SERIES

HIGH VOLTAGE

Model	HLX-TRIP2-HB-3P	6K	8K	10K	12K	15K	20K	25K	30K
Input (PV DC)									
Max. PV input power (W)		9000	12000	15000	18000	22500	30000	37500	45000
Rated PV input voltage (V)		690							
Number of independent MPPT inputs		2/(2:2)			3/(2:2:2)				
Max. PV input voltage (V)		1000							
MPPT voltage range (V)		200~900							
Start-up voltage (V)		100							
Max. PV input current per MPPT (A)		20/20			40/40/40				
Max. PV short-circuit current input per MPPT		25/25(A:1/B:1)			50/50/50(A:2/B:2/C:2)				
Battery									
Compatible battery type		Lithium-ion/Lead-Acid							
Rated battery voltage (V)		400							
Battery voltage range (V)		100~700							
Max. charging voltage (V)		700							
Max. charging/discharging current (A)		50							
Max. charging/discharging power (W)		6000	8000	10000	12000	15000	20000	25000	30000
Force wake up battery from PV function		YES							
Grid									
Rated AC voltage (V)		3L/N/PE, 230/400Vac							
Rated AC frequency (Hz)		50							
Rated AC output current (A)		9.1	12.2	15.2	18.2	22.8	30.3	36.3	45.6
Rated AC output power (W)		6000	8000	10000	12000	15000	20000	25000	30000
Max. AC input current (A)		13.6	18.2	22.8	27.3	34.1	45.5	56.8	68.2
PF		0.99 (Adjustable from 0.8 leading to 0.8 lagging)							
THDI		<3%							
Max. continuous AC passthrough current (A)		75							
GEN									
Rated GEN voltage (V)		3L/N/PE, 230/400Vac							
Rated GEN frequency (Hz)		50							
Rated GEN input current (A)		30							
Rated GEN input power (W)		12000							
Rated GEN current of BYPASS relays (A)		60							
UPS									
Rated output power (W)		6000	8000	10000	12000	15000	20000	25000	30000
Rated output voltage (V)		3L/N/PE, 230/400Vac							
Rated output current (A)		9.1	12.2	15.2	18.2	22.8	30.3	36.3	45.6
Rated output frequency (Hz)		50							
Surge power, duration		1.5Pn, 10s							
Switching time		20ms							
Wave form		Sine wave							
THDV		<3%							

HLX-TRIP2-HB-3P 6-30K (THREE-PHASE)



Efficiency	
Max. efficiency	97.4%
Max. charge/discharge efficiency	97.2%
Protection	
PV reverse polarity protection	YES
Over current/voltage protection	YES
Anti-islanding protection	YES
AC Short-circuit protection	YES
Leakage current protection	YES
Grid monitoring	YES
DC switch	YES
Ingress protection	YES
DC Surge protection	Type III
AC Surge protection	Type III
General	
Dimensions (W*H*D)	480*680*263.5mm / 18.9*26.8*10.4 in
Weight	38kg / 83.8lbs TBD
Ingress protection rating	IP65
Operating environment temperature range (°C)	-25~60
Storage temperature range (°C)	-40~70
Relative humidity	0~100%
Display & Communication interface	Touch color screen, RS485/Wifi/CAN
Warranty	5/10 years
Cooling method	Natural cooling Smart cooling
Topology	Transformer-less
Altitude	<4000m
Noise emission (typical)	<50dB
Standards & Certification	
EN62109-1/-2, CEI 2024	

ECO HYBRID/OFF-GRID

OUR CORE FEATURES

480V High Voltage PV Input

More solar, more power! Maximize efficiency and reduce energy loss with high-voltage PV integration.

Scalable Battery Compatibility

Supports various battery types and capacities, giving you the freedom to build a system that fits your needs.

OTA (Over-the-Air) Remote Firmware Updates

Keep your system up to date effortlessly with wireless firmware upgrades, ensuring optimal performance and new feature enhancements without on-site service.

ECO HYBRID/OFF-GRID

OUR CORE FEATURES

Up to 16 Units in Parallel

Seamless expansion for larger energy demands— ideal for homes, farms, and small commercial projects

Flexible Three-Phase System via Parallel Connection

Easily configure multiple units to form a three-phase system, adapting to various power needs with dynamic load balancing

Dedicated Generator Input

Smart backup power—connect generators for extra energy security in any situation.



OFF-GRID

HLX-GETA 1.5-11K(SINGLE-PHASE)

- Max. PV input 500V with 2 MPPT built-in
- Battery Activation via PV and Utility Grid
- Dual Outputs for Intelligent Load Management
- Real-Time 24/7 Remote Monitoring
- Flexible Operation Modes to Meet Diverse Energy Needs
- EQ Function for Enhanced Battery Performance and Longevity Wide Voltage Compatibility:
- Supports 12V, 24V, and 48V Battery Systems



OFF-GRID

Model	HLX-GETA 1.5K	2.2K	3.6K	5.8K	6K	8K	11K
Input(PV DC)							
Max. PV array power(W)	2000	3000	4000	6500		10000	11000
Max. PV input voltage(V)	500						
Number of independent MPPT inputs	1					2	
MPPT voltage range(V)	30~450			60~450		90~450	
Start-up voltage(V)	30			60		90	
Max. PV input current per MPPT(A)	15		27	27	18/18	27/27	
Battery							
Compatible battery type	Lithium-ion/Lead-acid						
Rated battery voltage(V)	12	24		48			
Floating Charge Voltage(V)	13.5	27		54			
OverCharge Protection(V)	16.5	32		63			
Max. PV Charge Current	100		120		140	160	
Max. AC Charge Current	60		80		120		
Max. Charge Current(PV+AC)	100		120		140	160	
Force wake up battery from PV function	Yes						
Force wake up battery from Grid function	No	Yes					
Grid							
Rated AC voltage(V)	230						
AC voltage range(V)	170-280VAC(For Personal Computer); 90-280VAC(For Home Appliances)						
Rated AC frequency(Hz)	50/60						
Rated AC output current(A)	6.5	9.6	15.7	25.2	26.1	34.8	47.8
Rated AC output power(W)	1500	2200	3600	5800	6000	8000	11000
PF	0.99						
THDI	<3%						
UPS							
Rated output power(W)	1500	2200	3600	5800	6000	8000	11000
Rated output voltage(V)	220/230VAC+5%						
Rated output current(A)	6.5	9.6	15.7	25.2	26.1	34.8	47.8
Rated output frequency(Hz)	50/60						
Output Port	Single Output		Dual Outputs				
Surge power, duration	2Pn						
Switching time(UPS)	10ms(For Personal Computer); 20ms(For Home Appliances)						
Wave form	Sine wave						
THDV	3%						
Overload Protection	5s@>=140% load; 10s@100%~140% load						

HLX-GETA 1.5-11K(SINGLE-PHASE)



Efficiency							
MPPT efficiency	99.0%						
Max. charge efficiency	96.0%						
Max. discharge efficiency	93.0%						
Protection							
Over current / voltage protection	Yes						
AC Short-circuit current protection	Yes						
DC Surge protection	Type III						
AC Surge protection Type III	Type III						
General							
Dimensions(W*H*D)	307*418*111mm / 12.1*16.5*4.4 in		322*488*122mm / 12.7*19.2*4.8 in		405*550*122mm / 15.9*21.7*4.8 in		
Weight(kg)	6kg/ 13.2lbs	6.2kg/ 13.7lbs	6.4kg/ 14.1lbs	8.1kg/ 17.9lbs	9.3kg/ 20.5lbs	14.4kg/ 31.7lbs	15.2kg/ 33.5 lbs
Ingress protection rating	IP31						
Parallel Capacity	No		Yes, 12		Yes, 6		
Relative humidity	5%~95%						
Operating environment temperature range(°C)	-10~55						
Storage temperature range(°C)	-15~60						
Display & Communication interface	WIFI / 2G						
Warranty	2 years						
Cooling method	Smart Cooling						
Altitude	<4000M						
Standard & Certification							

OFF-GRID

HLX-GETA 1.5-6K (SINGLE-PHASE)

- Max. PV input 500V with 2 MPPT built-in
- Battery Activation via PV and Utility Grid
- Dual Outputs for Intelligent Load Management
- Real-Time 24/7 Remote Monitoring
- Flexible Operation Modes to Meet Diverse Energy Needs
- EQ Function for Enhanced Battery Performance and Longevity
- Wide Voltage Compatibility: Supports 12V, 24V, and 48V Battery Systems



OFF-GRID

Model	HLX-3600 ACS
Battery	
Compatible battery type	Lithium-ion/Lead-Acid
Rated battery voltage (V)	48
Battery voltage range (V)	40~60
Max. charging voltage (V)	60
Max. charging/discharging current (A)	70
Max. charging/discharging power (W)	3600
Force wake up battery from Grid fuction(Y/N)	YES
Grid	
Rated AC voltage (V)	230
Rated AC frequency (Hz)	50/60
Rated AC output current (A)	16
Rated AC output power (W)	3600
Max. AC input current (A)	26
PF	0.99 (Adjustable from 0.8 leading to 0.8 lagging)
THDI	<3%
Max. continuous AC passthrough current (A)	40
UPS	
Rated output power (W)	3600
Rated output voltage (V)	230
Rated output current (A)	16
Rated output frequency (Hz)	50/60
Surge power, duration	4500W, 30s
Switching time	20ms
Wave form	Sinuswelle
THDV	<3%
Parallel capacity	6
Efficiency	
Max. efficiency	97.3%
Max. charge / discharge efficiency	94.5%

HLX-GETA 1.5-6K (SINGLE-PHASE)



Protection	
Over current/voltage protection	YES
Anti-islanding protection	YES
AC Short-circuit current protection	YES
Grid monitoring	YES
AC surge protection	Type III
General	
Dimensions (W*H*D)	650*440*220mm/25.6*17.3*8.6inch
Weight	15.6kg/34.4lbs
Ingress protection rating	IP65
Operating environment temperature range (°C)	-25~60
Storage temperature range (°C)	-40~65
Relative humidity	0~95%
Display & Communication interface	LCD, RS485/Wi-Fi/CAN
Warranty	5 years
Cooling method	Natural Cooling
Topology	Transformer-less
Altitude (m)	2000
Noise emission (Typical)	<25dB
AC connector	YES
Standards & Certification	
IEC62109-1, IEC62040, EN 61000-6-1:2007, EN 61000-6-3:2007+A1:2011+ AC:2012, EN 61000-3-2:2014, EN 61000-3-3:2013, VDE-AR-N 4105 EN50549-1, G98, G100	

OFF-GRID

HLX-SNA 3-6K (SINGLE-PHASE)

- Off-grid seamless switching 2 MPPTs, Max. PV input: 9.6kW
- Wide PV input voltage range: 100~500V
- Supports up to 18 units in parallel
- Max. charging and discharging current 140A
- Dedicated Port: Supports generator, AC coupling or smart load management for enhanced stability
- 24/7 real-time monitoring via LUX app with worry-free updates



OFF-GRID

Model	HLX-SNA 3K	HLX-SNA 4K	HLX-SNA 5K	HLX-SNA 6K
Input (PV DC)				
Max. PV input power (W)	6000 (3000/3000)	8000 (4000/4000)	8000 (4000/4000)	9600 (4800/4800)
Rated PV input voltage (V)	320			
Number of independent MPPT inputs	2/(1:1)			
PV input voltage range (V)	100-500			
MPPT voltage range (V)	120-385			
Start-up voltage (V)	100			
Max. PV input current per MPPT (A)	17/17			
Max. PV short-circuit current input per MPPT (A)	25/25			
Battery				
Compatible battery type	Lithium-ion/Lead-Acid			
Rated battery voltage (V)	48			
Battery voltage range (V)	38.4~60			
Max. charging/discharging current (A)	70/70	90/90	110/110	140/140
Max. charging/discharging power (W)	3000	4000	5000	6000
Recommend capacity of battery per inverter	>100AH	>200AH	>200AH	>200AH
Force wake up battery from PV function	YES			
Force wake up battery from Grid function	YES			
Grid				
Rated AC voltage (V)	230			
Rated AC frequency (Hz)	50/60			
Rated AC output current (A)	13.5	17.5	22	26.5
Rated AC output power (W)	3000	4000	5000	6000
Max. AC input power (W)	8000			9000
PF	0.99(Adjustable from 0.8 leading to 0.8 lagging)			
THDI	<5%			
Max. continuous AC passthrough current (A)	35			40
GEN				
Rated GEN voltage (V)	220/230/240			
Rated GEN frequency (Hz)	50/60			
Rated GEN input current (A)	32			
Rated GEN input power (W)	7370			
Rated GEN current of BYPASS relays (A)	60			

HLX-SNA 3-6K (SINGLE-PHASE)

UPS				
Rated output power (W)	3000	4000	5000	6000
Rated output voltage (V)	230			
Rated output current (A)	13.5	17.5	22	26.5
Rated output frequency (Hz)	50/60			
Surge power, duration	2Pn, <5s			
Switching time	<10ms@Single/<20ms@Parallel			
Wave form	Sine wave			
THDV	3%			
Efficiency				
Max. MPPT efficiency	99.9%			
Max. efficiency	93.0%			
Max. charging efficiency	93.0%			
Max. discharging efficiency	93.0%			
Protection				
Over current/voltage protection	YES			
AC Short-circuit current protection	YES			
Grid monitoring	YES			
AC surge protection	Type III			
Battery reverse polarity protection	YES			
General				
Dimensions (W*H*D)	330*505*135mm/13*19.9*5.3inch			
Weight	14.5kg/32lbs			
Ingress protection rating	IP20			
Operating environment temperature range (°C)	0~50			
Storage temperature range (°C)	-15~60			
Relative humidity	5%~95%			
Display & Communication interface	LCD+LED, RS485/Wi-Fi/CAN			
Warranty	2 years			
Cooling method	Smart Cooling			
Topology	Transformer-less			
Altitude	<2000m			
Noise emission (typical)	<50dB			
Standards & Certification				
IEC 62109-1/2, IEC 61683, EN 61000				



OFF-GRID

HLX-SNA2-EU 3-6K (SINGLE-PHASE)

- 2 MPPTs with Max. PV Input of 10kW
- IP54 Protection Rating: Ensures reliable dust and water resistance
- Parallel Operation: Supports up to 20 units for scalable energy solutions
- Max. Charge/Discharge Current: 140A
- Seamless Off-Grid Switching: Automatic transition for uninterrupted power
- Dedicated Port: Supports generator or smart load management for enhanced system stability
- Smart Monitoring: Remote configuration and real-time performance tracking



OFF-GRID

Model	HLX-SNA2-EU 3K	4K	5K	6K
Input (PV DC)				
Max. PV array power (W)	6000 (3000/3000)	8000 (4000/4000)	10000 (5000/5000)	13000 (6500/6500)
Max. PV input power (W)	6000 (3000/3000)	8000 (4000/4000)	8000 (4000/4000)	10000 (5000/5000)
Rated PV input voltage (V)	320			
Number of independent MPPT inputs	2/(1:1)			
PV input voltage range (V)	100~500			
MPPT voltage range (V)	80~420			
Start-up voltage (V)	100			
Max. PV input current per MPPT (A)	34 (17/17)			
Max. PV short-circuit current input per MPPT (A)	50 (25/25)			
Battery				
Compatible battery type	Lithium-ion/Lead-Acid			
Rated battery voltage (V)	48			
Battery voltage range (V)	38.4~60			
Max. charging/discharging current (A)	75	90	110	140
Max. charging/discharging power (W)	3300	4000	5000	6500
Recommend capacity of battery per inverter	>200AH			
Force wake up battery from PV function	YES			
Force wake up battery from Grid function	YES			
Force wake up battery from GEN function	YES			
Grid				
Rated AC voltage (V)	230			
Rated AC frequency (Hz)	50/60			
Rated AC output current (A)	14.3	17.5	22	26.5
Rated AC output power (W)	3300	4000	5000	6500
Max. AC input power (W)	6000	8000		9000
PF	0.99(Adjustable from 0.8 leading to 0.8 lagging)			
THDI	<5%			
Max. continuous AC passthrough current (A)	40		60	
GEN				
Rated GEN voltage (V)	230			
Rated GEN frequency (Hz)	50/60			
Rated GEN input current (A)	26	32		
Rated GEN input power (W)	3300	7370		
Rated GEN current of BYPASS relays (A)	40		60	

HLX-SNA2-EU 3-6K (SINGLE-PHASE)

UPS				
Rated output power (W)	3300	4000	5000	6500
Rated output voltage (V)	230/120	230		
Rated output current (A)	14.3	17.5	26.5	
Rated output frequency (Hz)	50/60		22	
Surge power, duration	6600, 5s	8000, 5s	10000, 5s	13000, 5s
Switching time	<10ms @ Single; <20ms @ Parallel			
Wave form	Sine wave			
Load Capacity of Motor	1HP	2HP	3HP	
OverLoad Capacity	10s@110%~150% load; 5s@150%~200% load			
THDV	3%			
Efficiency				
Max. MPPT efficiency	99.0%			
Max. efficiency	94.0%	93.0%		94.0%
Max. charging efficiency	94.0%	93.0%		94.0%
Max. discharging efficiency	93.0%			
Protection				
Over current/voltage protection	YES			
AC Short-circuit current protection	YES			
Grid monitoring	YES			
AC/DC surge protection	YES			
General				
Dimensions (W*H*D)	389*443*156mm / 15.3*17.4*6.1 in			
Weight	12kg / 24.5lbs			
Ingress protection rating	IP20/IP54(optional)			
Operating environment temperature range (°C)	0~50			
Storage temperature range (°C)	-15~60			
Relative humidity	5%~95%			
Display & Communication interface	LCD+LED, RS485/Wi-Fi/CAN			
Warranty	4 years			
Cooling method	Smart Cooling			
Topology on AC side	Transformer-less			
Topology on Battery side	Transformer			
Altitude	4000m,>2000m Power derating			
Noise emission (typical)	<40dB			
Standards & Certification				



OFF-GRID

HLX-SNA-EU 12-14K (SINGLE-PHASE)

- 2 MPPTs with 4 strings, Max. 24kW PV input
- Max. charging and discharging current: 250A
- Off-grid application for high demand with 12kW output power
- Dual AC output ports for multiple load connections
- Integrated Design with Load and Battery Breaker
- PV or AC or Generator wake up battery
- Supports up to 16 units in parallel
- Separate GEN port
 - Up to 19.2kW Gen/AC coupling input
 - Auto generator start and stop control



OFF-GRID

Model	HLX-SNA-EU 12000	HLX-SNA-EU 14000
INPUT (PV DC)		
Max. PV input power (W)	24000 (12000/12000)	
Rated PV input voltage (V)	320	
Number of independent MPPT inputs	2/(2:2)	
PV input voltage range (V)	100-480	
MPPT voltage range (V)	120-440	
Start-up voltage (V)	100	
Max. PV input current per MPPT (A)	35/35	
Max. PV short-circuit current input per MPPT (A)	44/44	
Battery		
Compatible battery type	Lithium-ion/Lead-Acid	
Rated battery voltage (V)	48/51.2	
Battery voltage range (V)	46.4~60/38.4~60	
Max. charging / discharging current (A)	250	
Max. charging / discharging power (W)	12000	
Force wake up battery from PV and Grid function	YES	
Grid		
Rated AC voltage (V)	230	
AC Start-up Voltage	90	
Acceptable Input Voltage Range (V)	130~280	
Rated AC frequency (Hz)	50/600	
Rated AC input current (A)	100	
Rated AC input power (W)	24000	
PF	0.99	
THDI	<5%	
Max. continuous AC passthrough current(A)	100	
GEN		
Rated GEN voltage (V)	230	
Rated GEN frequency (Hz)	50/60	
Rated GEN input current (A)	65	
Rated GEN input power (W)	15000	
Rated GEN current of BYPASS relays (A)	90	

HLX-SNA-EU 12-14K (SINGLE-PHASE)

UPS		
Rated output power (W)	12000	14000
Rated output voltage (V)	230	
Rated output current (A)	52	60
Rated output frequency (Hz)	50/60	
Switching time (UPS)	<10ms	
Wave form	Sine wave	
THDV	<3%	
Overload protection	5s@≥150% load /10s@110%~150% load	
Efficiency		
Max. efficiency	93.5%	
Max. charging / discharging efficiency	93.0%	
Max. MPPT efficiency	99.0%	
Protection		
PV reverse polarity protection(Y/N)	YES	
Over current / voltage protection(Y/N)	YES	
AC Short-circuit current protection(Y/N)	YES	
Grid monitoring(Y/N)	YES	
DC switch(Y/N)	YES	
DC / AC Surge protection	Type III	
Battery reverse polarity protection(Y/N)	Yes	
General		
Dimensions (W*H*D mm)	530*830*150mm / 17.72*25.59*5.9 in	
Weight	43.5kg / 95.9lbs	
Ingress protection rating	IP20	
Operating environment temperature range(°C)	0~45	
Storage temperature range(°C)	-15~60	
Relative humidity	5% ~ 95%	
Display & Communication interface	LCD+RGB, RS485 / Wifi / CAN	
Warranty	2 years	
Cooling method	Smart cooling	
Topology on AC / Battery side	Transformer-less / Transformer	
Altitude (m)	<2000	
Noise emission (typical)	<50dB	
Standard & Certification		
CE		



OFF-GRID

HLX-SNA2-EU-LT 12-14K (SINGLE-PHASE)

- Max. PV input: 18kW with 2 MPPTs
- Max. charging and discharging current: 250A
- Support up to 16 units in parallel for on/off grid
- Lite Design for Easier Installation
- Support Hybrid Working Modes
- Intelligent Operating Mode to Lower Energy Costs & Quick ROI
- Separate Gen Port for
 - Auto start-stop
 - Working with the existing grid-tied system
 - Smart load management



OFF-GRID

Model	HLX-SNA2-EU-LT 12K	HLX-SNA2-EU-LT 14K
INPUT (PV DC)		
Max. PV input power (W)	18000	
Rated PV input voltage (V)	320	
Number of independent MPPT inputs	2/(2:1)	
PV input voltage range (V)	100-480	
MPPT voltage range (V)	120-440	
Start-up voltage (V)	100	
Max. PV input current per MPPT (A)	35/17.5	
Max. PV short-circuit current input per MPPT (A)	44/22	
Battery		
Compatible battery type	Lithium-ion/Lead-Acid	
Rated battery voltage (V)	48/51.2	
Battery voltage range (V)	46.4~60/38.4~60	
Max. charging / discharging current (A)	250	
Max. charging / discharging power (W)	12000	
Force wake up battery from PV and Grid function	YES	
Grid		
Rated AC voltage (V)	230	
AC Start-up Voltage	90	
Acceptable Input Voltage Range (V)	130~280	
Rated AC frequency (Hz)	50/60	
Rated AC input current (A)	100	
Rated AC input power (W)	24000	
PF	0.99	
THDI	<5%	
Max. continuous AC passthrough current(A)	100	
GEN		
Rated GEN voltage (V)	230	
Rated GEN frequency (Hz)	50/60	
Rated GEN input current (A)	65	
Rated GEN input power (W)	15000	
Rated GEN current of BYPASS relays (A)	90	

HLX-SNA2-EU-LT 12-14K (SINGLE-PHASE)

UPS		
Rated output power (W)	12000	14000@230V
Rated output voltage (V)	230	
Rated output current (A)	52	60
Rated output frequency (Hz)	50/60	
Switching time (UPS)	<10ms	
Wave form	Sine wave	
THDV	<3%	
Overload protection	5s@≥150% load /10s@110%~150% load	
Efficiency		
Max. efficiency	93.5%	
Max. charging / discharging efficiency	93.0%	
Max. MPPT efficiency	99.0%	
Protection		
Over current / voltage protection(Y/N)	YES	
AC Short-circuit current protection(Y/N)	YES	
Grid monitoring(Y/N)	YES	
DC / AC Surge protection	Type III	
General		
Dimensions (W*H*D mm)	520*580*163mm / 20.5*22.8*6.4 in	
Weight	TBD	
Ingress protection rating	IP20	
Operating environment temperature range(°C)	0~45	
Storage temperature range(°C)	-15~60	
Relative humidity	5% ~ 95%	
Display & Communication interface	LCD+RGB, RS485 / Wifi / CAN	
Warranty	2 years	
Cooling method	Smart cooling	
Topology on AC / Battery side	Transformer-less / Transformer	
Altitude (m)	<2000	
Noise emission (typical)	<50dB	
Standard & Certification		
CE		



OFF-GRID

HLX-SNA2-EU-LT 10-14K

(SINGLE-PHASE)

- Max. PV input: 24kW with 2 MPPTs
- Max. charging and discharging current: 250A
- Support up to 16 units in parallel for on/off grid
- Lite Design for Easier Installation
- Support Hybrid Working Modes
- Intelligent Operating Mode to Lower Energy Costs & Quick ROI
- Separate Gen Port for
 - Auto start-stop
 - Working with the existing grid-tied system
 - Smart load management



OFF-GRID

Model	HLX-SNA2-EU-LT 10K	12K	14K
INPUT (PV DC)			
Max. PV input power (W)	18000 (9000/9000)	24000 (12000/12000)	
Rated PV input voltage (V)		320	
Number of independent MPPT inputs		2/(2:2)	
PV input voltage range (V)		100-480	
MPPT voltage range (V)		120-440	
Start-up voltage (V)		100	
Max. PV input current per MPPT (A)	26/26	35/35	
Max. PV short-circuit current input per MPPT (A)	32.5/32.5	44/44	
Battery			
Compatible battery type	Lithium-ion/Lead-Acid		
Rated battery voltage (V)	48/51.2		
Battery voltage range (V)	46.4~60/38.4~60		
Max. charging / discharging current (A)	210	250	
Max. charging / discharging power (W)	10000	12000	
Force wake up battery from PV and Grid function	YES		
Grid			
Rated AC voltage (V)	230		
AC Start-up Voltage	90		
Acceptable Input Voltage Range (V)	130~280		
Rated AC frequency (Hz)	50/60		
Rated AC input current (A)	100		
Rated AC input power (W)	24000		
PF	0.99		
THDI	<5%		
Max. continuous AC passthrough current(A)	100		
GEN			
Rated GEN voltage (V)	230		
Rated GEN frequency (Hz)	50/60		
Rated GEN input current (A)	65		
Rated GEN input power (W)	15000		
Rated GEN current of BYPASS relays (A)	90		

HLX-SNA2-EU-LT 10-14K (SINGLE-PHASE)

UPS	10K	12K	14K
Rated output power (W)	10000	12000	14000 (with PV + Battery)
Rated output voltage (V)		230	
Rated output current (A)	43.5	52	61
Rated output frequency (Hz)		50/60	
Switching time (UPS)		<10ms	
Wave form		Sine wave	
THDV		<3%	
Overload protection	5s@≥150~200%*10K / 10s@110%~150%*10K(Only Battery)	5s@≥150%*12K / 10s@110%~150%*12K(Only Battery)	10s@≥118% *14K (With PV+ Battery)
Efficiency			
Max. MPPT efficiency	99.0%		
Max. efficiency	93.5%		
Max. charge / discharge efficiency	93.0%		
Protection			
Over current / voltage protection(Y/N)	YES		
AC Short-circuit current protection(Y/N)	YES		
Grid monitoring(Y/N)	YES		
DC / AC Surge protection	Type III		
General			
Dimensions (W*H*D mm)	520*580*163mm / 20.5*22.8*6.4 in		
Weight	32.5kg / 71.7lbs		
Ingress protection rating	IP20		
Operating environment temperature range(°C)	0~45		
Storage temperature range(°C)	-15~60		
Relative humidity	5% ~ 95%		
Display & Communication interface	LCD+RGB, RS485 / Wifi / CAN		
Warranty	2 years		
Cooling method	Smart cooling		
Topology on AC / Battery side	Transformer-less / Transformer		
Altitude (m)	<2000		
Noise emission (typical)	<50dB		
Standard & Certification			
CE			



RETROFIT YOUR SOLAR SYSTEM

AC RETROFIT

LXP 3600 ACS

Retrofit an existing on-grid solar system to add battery storage.

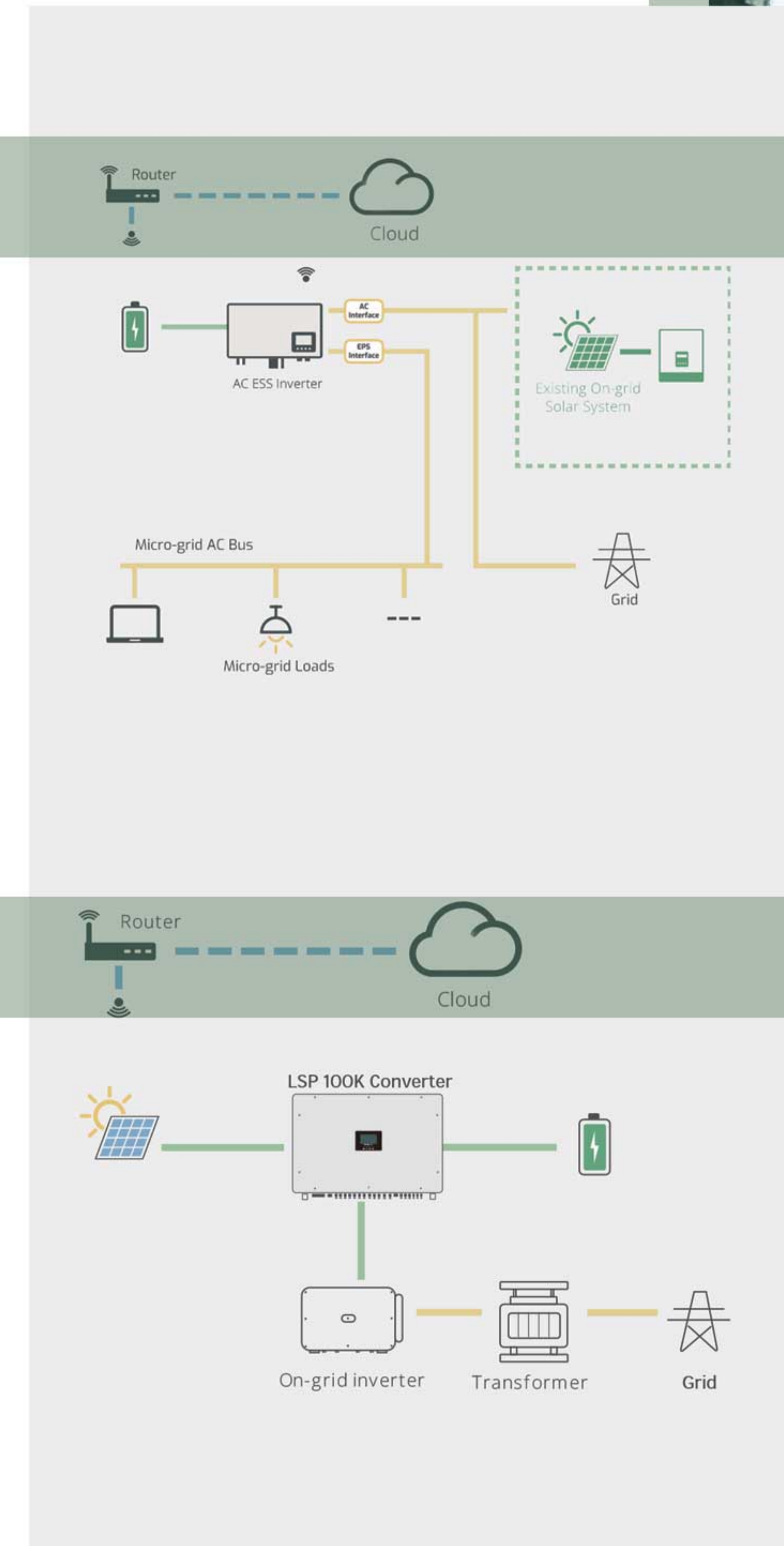
It couldn't be easier than installing an LXP AC series inverter coupled on AC side with a battery pack. Installation of a Lux AC system should not affect existing solar systems or feed in tariffs.

DC RETROFIT

LSP 100K

To retrofit an existing PV system by incorporating DC side coupling to create an energy storage system. With this enhanced storage system:

It becomes compatible with batteries, enabling the addition of more PV panels, while also allowing the PV system to operate on a predefined schedule; By setting the charging/ discharging timeline of the battery, it achieves an equivalent/similar effect as the Peak Shaving operating mode.



HLX- 3600 ACS

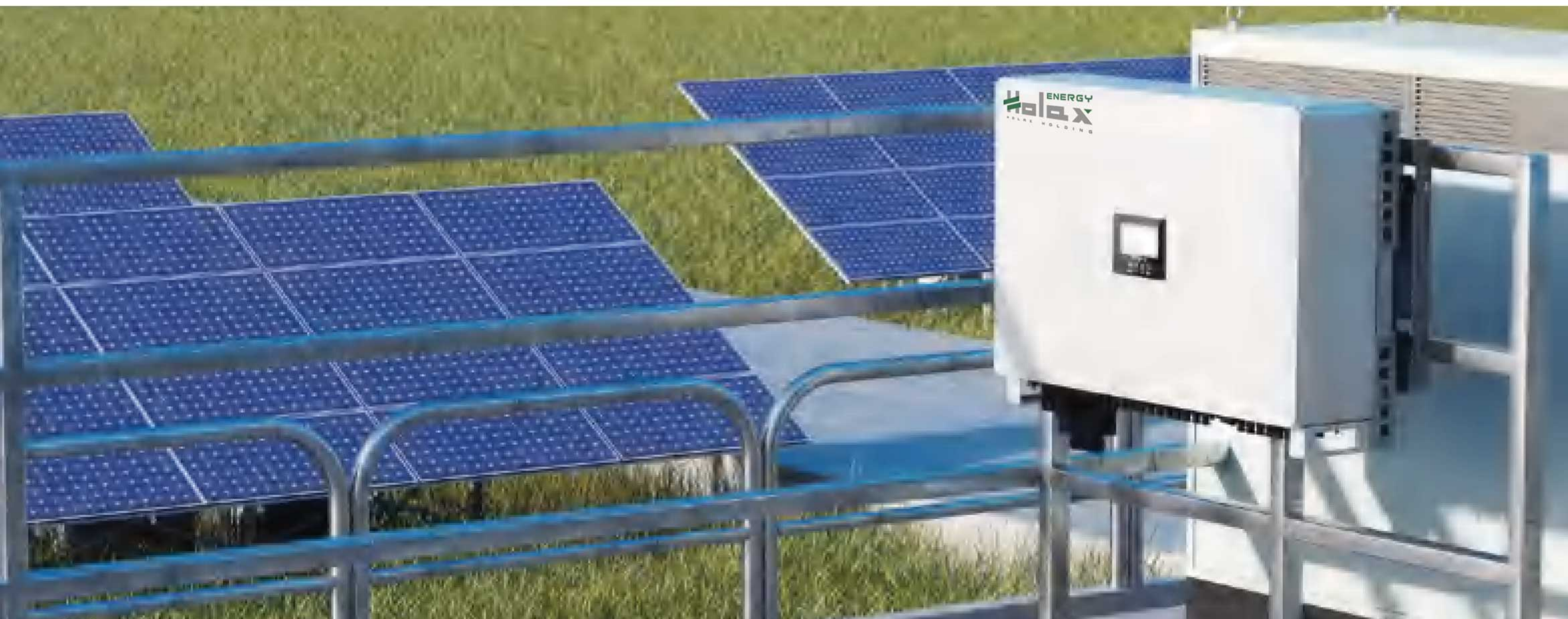
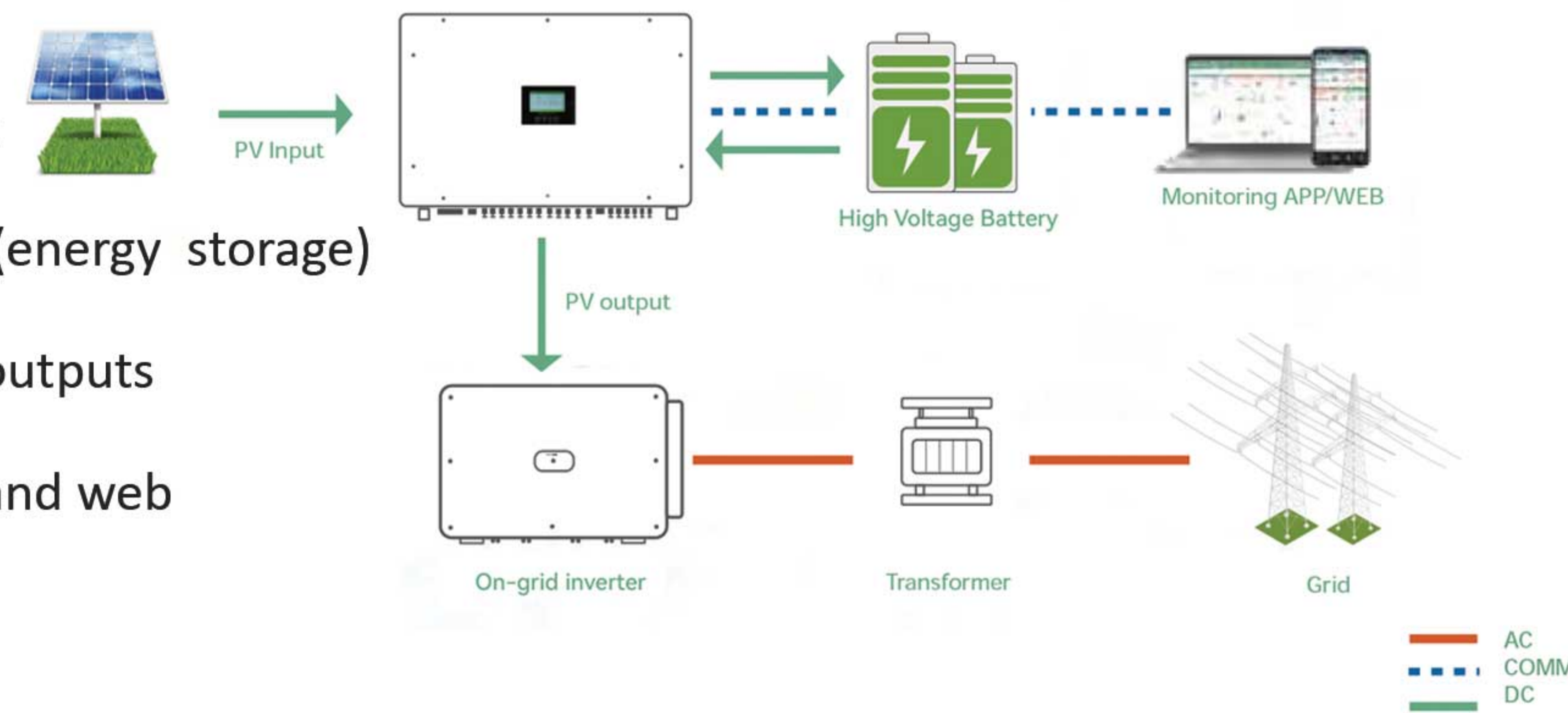
- Retrofit any on-grid/micro-grid system to energy storage system Battery charging/discharging current: 70A
- Octopus smart time of use and weather optimize On/off grid seamless switching
- Support up to 8pcs in parallel
- Separate EPS port for flexible load management



Model	HLX- 3600 ACS
Battery	
Compatible battery type	Lithium-ion/Lead-Acid
Rated battery voltage (V)	48
Battery voltage range (V)	40~60
Max. charging voltage (V)	60
Max. charging/discharging current (A)	70
Max. charging/discharging power (W)	3600
Force wake up battery from Grid fuction(Y/N)	YES
Grid	
Rated AC voltage (V)	230
Rated AC frequency (Hz)	50/60
Rated AC output current (A)	16
Rated AC output power (W)	3600
Max. AC input current (A)	26
PF	0.99 (Adjustable from 0.8 leading to 0.8 lagging)
THDI	<3%
Max. continuous AC passthrough current (A)	40
UPS	
Rated output power (W)	3600
Rated output voltage (V)	230
Rated output current (A)	16
Rated output frequency (Hz)	50/60
Surge power, duration	4500W, 30s
Switching time	20ms
Wave form	Sinuswelle
THDV	<3%
Parallel capacity	6
Efficiency	
Max. efficiency	97.3%
Max. charging efficiency	94.5%
Max. discharging efficiency	94.5%
Protection	
Over current/voltage protection	YES
Anti-islanding protection	YES
AC Short-circuit current protection	YES
Grid monitoring	YES
AC surge protection	Type III
General	
Dimensions (W*H*D)	650*440*220mm/25.6*17.3*8.6inch
Weight	15.6kg/34.4lbs
Ingress protection rating	IP65
Operating environment temperature range (°C)	-25~60
Storage temperature range (°C)	-40~65
Relative humidity	0~95%
Display & Communication interface	LCD, RS485/Wi-Fi/CAN
Warranty	5 years
Cooling method	Natural Cooling
Topology	Transformer-less
Altitude	2000m
Noise emission (Typical)	<25dB
AC connector	YES
Standards & Certification	
IEC62109-1, IEC62040, EN 61000-6-1:2007, EN 61000-6-3:2007+A1:2011+ AC:2012, EN 61000-3-2:2014, EN 61000-3-3:2013, VDE-AR-N 4105 EN50549-1, G98, G100	

HLX-LSP 100K

- Max. 200kW PV input and 100kW PV output
- Retrofit on-grid system to hybrid system (energy storage)
- DC-coupling, 24 MPPT inputs and 12 MPPT outputs
- 24/7 real-time monitoring via free LUX app and web
- Advanced power management logic
- Colorful touch LCD, IP65 for indoor/outdoor installation



Model	HLX-LSP 100K
INPUT (PV DC)	
Max. input power(kW)	200
Max. input voltage(V)	1100
Rated PV input voltage(V)	630
MPPT voltage range(V)	300~1000
Start-up voltage(V)	330
Max. short-circuit per MPPT(A)	33
Max. current per MPPT input(A)	26
Number of MPPT inputs	12
Number of input strings	24
Battery	
Type	Lithium-ion/Lead-acid
Max. charge/discharge power(kW)	100
Voltage range(V)	300~700
Max. charge/discharge current(A)	200
Max. charge/discharge efficiency	98.1%
PV output	
DC-DC output rated power(kW)	100
Normal output voltage(V)	630
Output voltage range(V)	500~1000
Max. output current(A)	20
Output strings	12
Output trackers	12
Protection	
DC reverse-polarity protection	Yes
DC surge protection	Type III
General	
Dimensions(W*H*D)	1015*680*310mm / 39.9*26.8*12 in
Weight(with mounting plate)	120kg/264.5lbs
Protection degree rating	IP65
Topology	Transformer-less
Cooling method	Natural Cooling
Relative humidity	0%~100%
Operating environment temperature range(°C)	-25~60
Connector(PV input and Output)	MC4
Battery connector	Screw
Altitude	<4000m
Warranty	5 years
Display	Touch color screen, LED+LCD
Communication interface	RS485/CAN/Wi-Fi
Standards & Certifications	
EN 62109-1 / -2, EN61000	

HLX-ECO BEAST (SINGLE-PHASE)

- 2 MPPTs, Max. 9.6kW PV input
- On/off-grid switchin
- Battery module level mornitoring
- PV or AC or Generator wake up battery
- Expandable storage – Up to 16pcs in parallel
- Remote monitoring and firmware updates with battery



HLX-ECO BEAST (SINGLE-PHASE)

Model		HLX-ECO BEAST
INVERTER MODULE		
Input (PV DC)		
Max. PV input power (W)		9600(4800/4800)
Rated PV input voltage (V)		320
Number of independent MPPT inputs		2/(1:1)
PV input voltage range (V)		100~480
MPPT voltage range (V)		120~385
Start-up voltage (V)		100
Max. PV input current per MPPT (A)		17/17
Max. PV short-circuit current input per MPPT (A)		25/25
Max. PV charging current (A)		140
Battery Input		
Battery voltage (V)		38.4~60
Max. charging/discharging current (A)		140
Max. charging/discharging power (W)		6000
UPS output @ off-grid		
Output voltage waveform		Pure sine wave
Output voltage regulation (V)		208/220/230/240±5%
Output frequency (Hz)		50/60
Rated output power (W)		6000
Rated output current (A)		26.5
Peak efficiency		93%
Overload protection		5s@≥150% overload; 10s@110%~150% overload
Surge power		2*Pn, 5s
Parallel quantity		16pcs
AC Input		
Nominal input voltage (V)		230
Nominal input frequency (Hz)		50/60(Auto detection)
Max. AC input current (A)		39.5
Max. AC input power (W)		9000
Max. AC charging current (A)		140
AC Output@Grid		
Rated AC output current (A)		26.5
Rated AC output power (W)		6000
Rated AC current of bypass relays (A)		60
Switching time		Typical<7ms@Single; <20ms@Parallel



Gen		
Rated GEN voltage (V)		220/230/240
Rated GEN frequency (Hz)		50/60
Rated GEN input Current (A)		32
Rated GEN input Power (W)		7370
Rated GEN current of bypass relays (A)		60
Battery MODULE		
Battery power (kWh)		5.12
Rated voltage (V)		51.2
Rated capacity (Ah)		100
Battery type		Lithium-ion
Max. parallel (Default)		2PCS
Max. discharging current (A)		100
Max. charging current (A)		100
Dimension (W*H*D) (mm)		580*434*165mm / 22.8*17.1*6.5 in
Net weight		54kg / 119.1lbs
Standard		UN38.3, CE
Protection/General Specifications		
Grid monitoring		YES
AC surge protection		Type III
Safety certification		CE, UN38.3, NRS097
Dimension(W*H*D) (mm)		580*1300*165mm / 22.8*51.2*6.5 in
Weight		125.4kg/276.4lbs
Ingress protection rating		IP20
Display & Communication interface		LCD+LED, RS485/Wi-Fi/CAN
Cooling method		Smart cooling
Topology		Transformer-less
Noise emission(typical) (dB)		<58
Operating temperature range (°C)		0~45
Storage temperature (°C)		-15~60
Humidity		5% to 95% Relative Humidity (Non-condensing)
Altitude (m)		<2000
Standards & Certification		
NRS097-2-1:2024,EN/IEC62109-1/-2,EN61000		

 energy.holaxco.com

 info@energy.holaxco.com



SCAN ME

